

N.E. 1/4 OF
SECTION 34, T.7N., R.1W., S.L.B.&M.

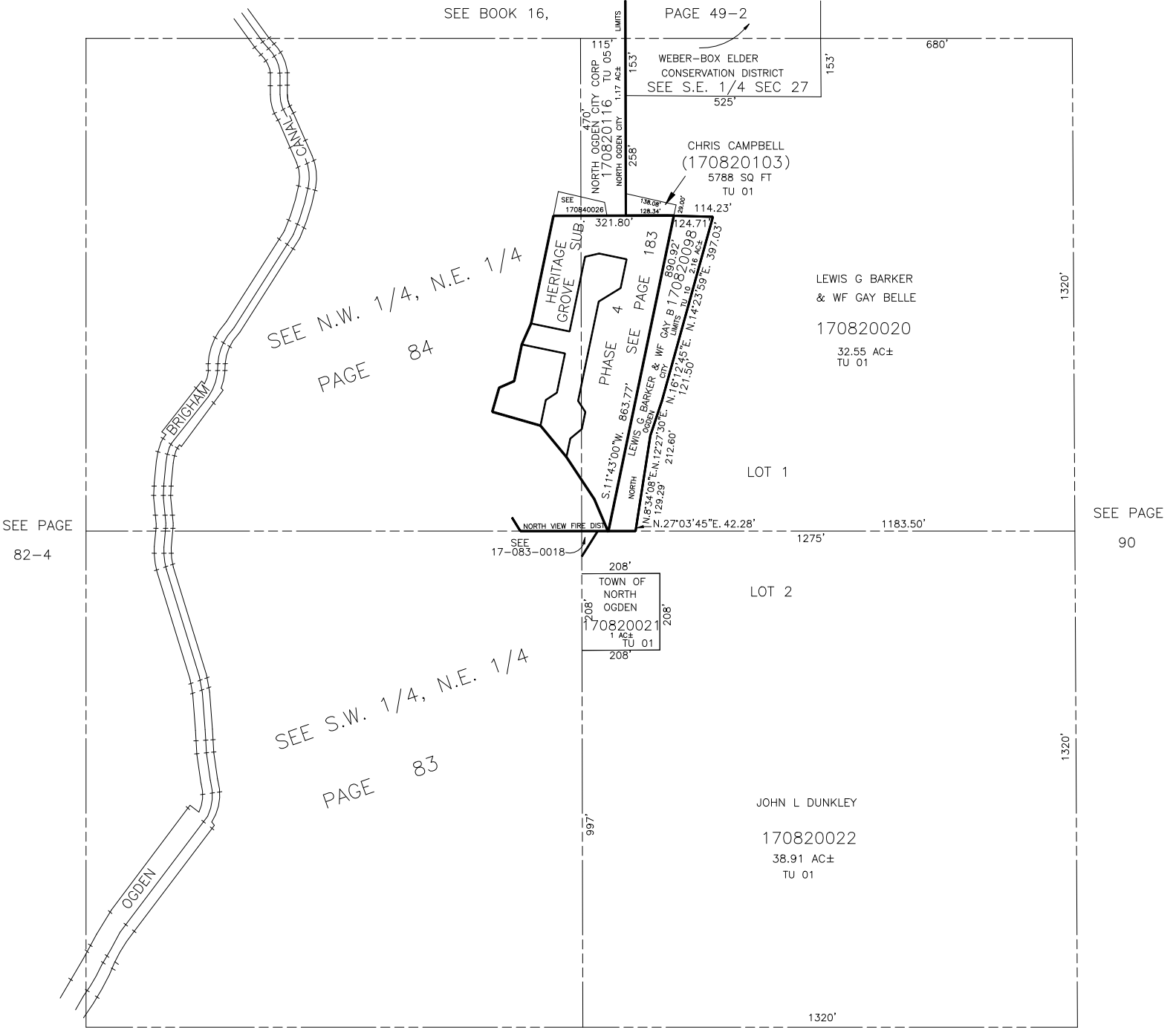
NORTH OGDEN CITY & WEBER COUNTY

TAXING UNIT: 01, 05, 10

SCALE 1" = 200'

SEE BOOK 16,

PAGE 49-2



SEE PAGE
82-4

SEE PAGE
90

SEE N.W. 1/4, N.E. 1/4
PAGE 84

SEE S.W. 1/4, N.E. 1/4
PAGE 83

SEE PAGE 82-2